

# EUROLAMP®

---

---

LINE

# 100



**RGBW** MINI LED

CONTROLLED by App & REMOTE CONTROL

---



---

**USER MANUAL**

## 1. Product Features:

- Category: LED Controller
- Controller: 28keyIR + Bluetooth
- APP: Surplife
- Operation Platform: Android 7.0 or IOS12.0 or later
- Input Voltage: USB, DC5V
- Lights color: RGBIC ,Jy1903
- Max Output Power: 0.4W/M 20lm/led
- Working Temperature: -20~+55°C
- Control Distance: 30m
- Material: ABS/PVC,copper wire
- Dimensions: 74x20x15 mm

## 2. Schematic connection diagram:

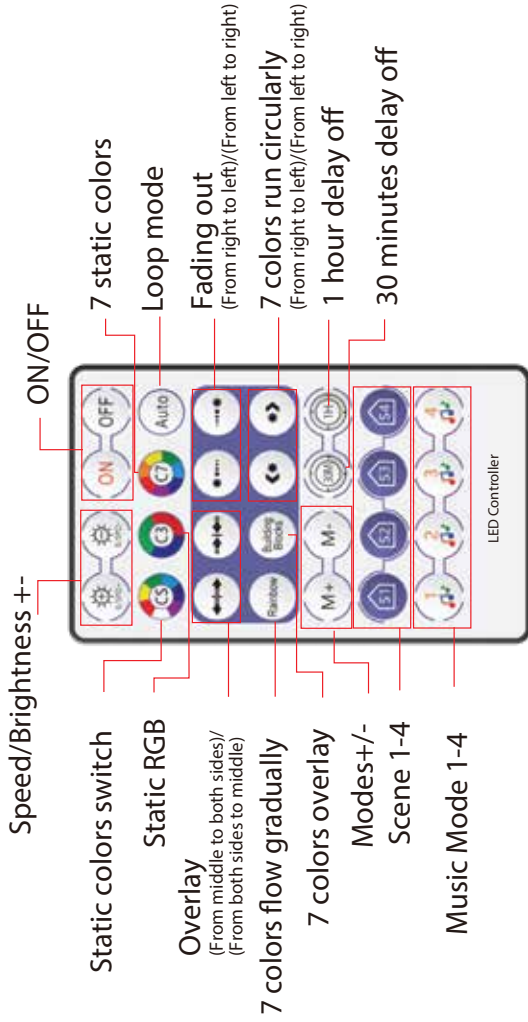


## 3. Controller Key Instruction



- 1) When it's power off: short press to turn on the device
- 2) When it's power on: short press to change the dynamic mode
- 3) Long press for 3 secondS to turn off the device

## 4. Key Instruction



**Note:** Scene mode can only record one custom color

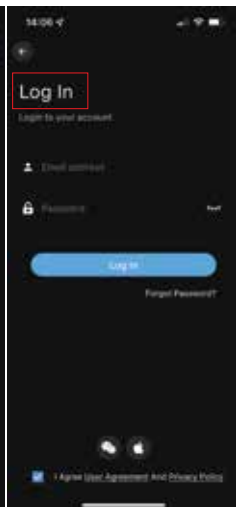
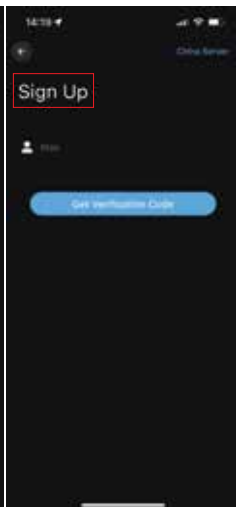
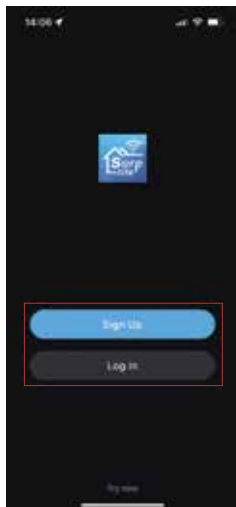
## 5. Download Surplife APP:

- Download “ Surplife” APP from App store and Google Play Store, or scan the QR code.

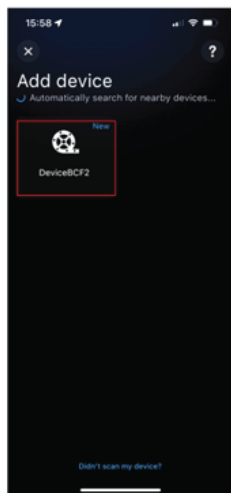
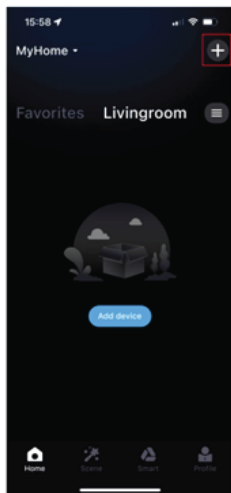


## 6. How to connect to Surplife App?

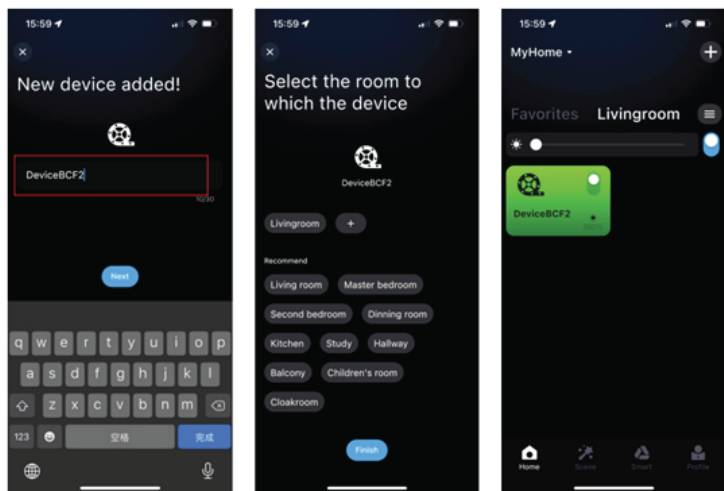
- Register/Login your Surplife account.



- Turn on the device and enable your phone's bluetooth.
- Press "Sign Up"
- Add your Mail.
- Enter the 6-digit code that will appear in your email.
- Choose your own secret code and Login
- Open "Surplife" APP, tap "Add Device" or click "+" to add the device.



(8) Rename the device and choose a room for it.



## 7. Frequent questions

### How to set up Bluetooth?

- Turn on Bluetooth on your phone.
- Then activate the product.
- Once you have done the installation, open the app and the device will automatically connect to the product.

### What can I do if the connection of the already existing device via Bluetooth or the attempt to add a new one failed?

- Turn off the product and then insert it again, if the problem is not solved,
- Restart the phone.



Scan the "Instructions" with the QR code to read the application's capabilities manual in electronic form.



---

EUROLAMP SA reserves the right to interpret and amendment the content of this document at any time without prior notice.

---



The marking indicates that the product should not be disposed of with household waste throughout the European Union. Recycle components and parts of the product, return used device, use a collection system or contact with the reseller you have purchased the product.

**IP20**  
**CE**



IMPORTED IN EU BY EUROLAMP SA: KAMPOS DIAVATA - IONIA / 570 08 / THESSALONIKI - GREECE / T: +30 2310 574802  
info@eurolamp.gr / www.eurolampglobal.com  
MADE IN CHINA